



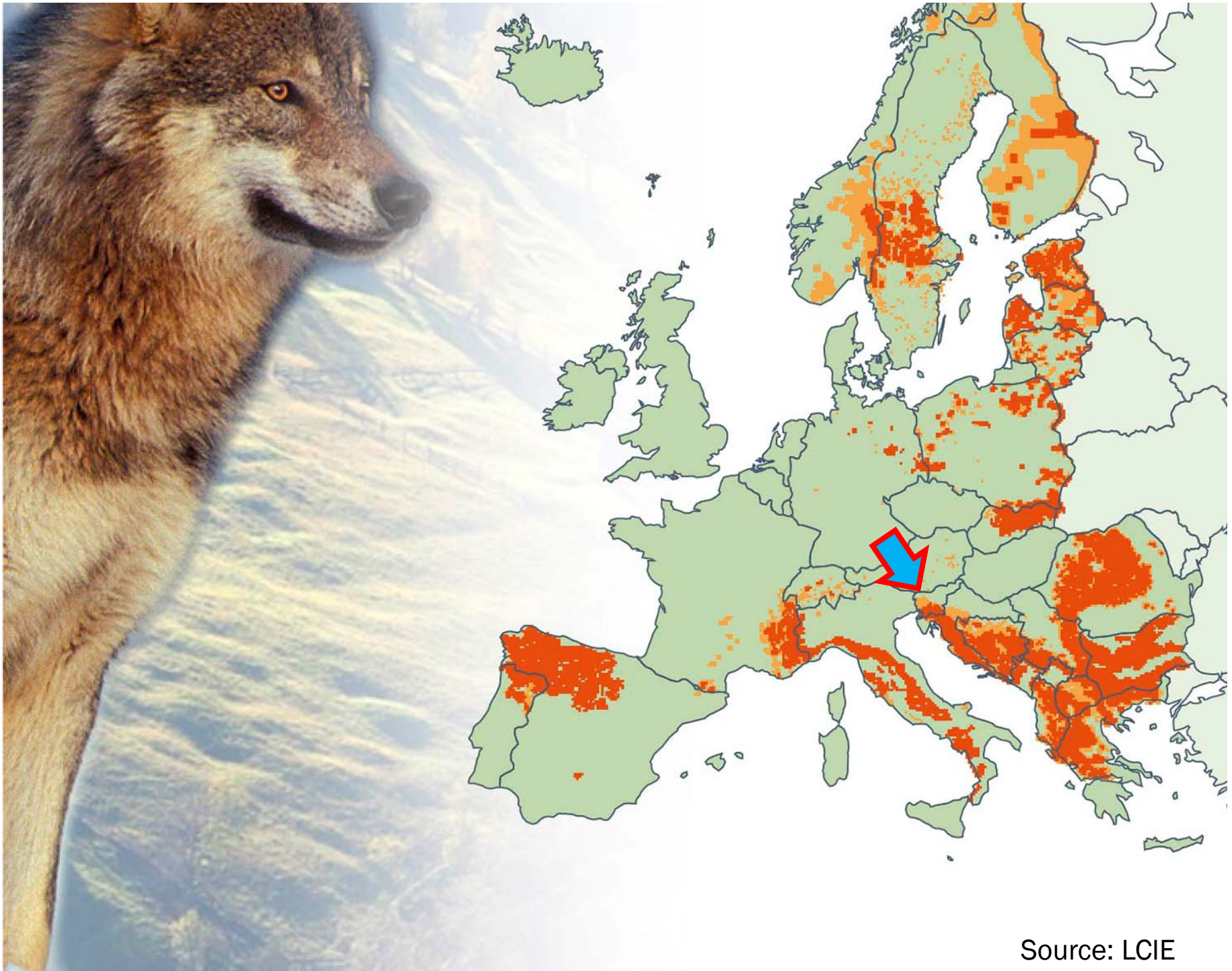
ZAVOD za GOZDOVE
SLOVENIJE

Slovenia Forest Service

Wolfsmanagement in Slovenien - Herdenschutz

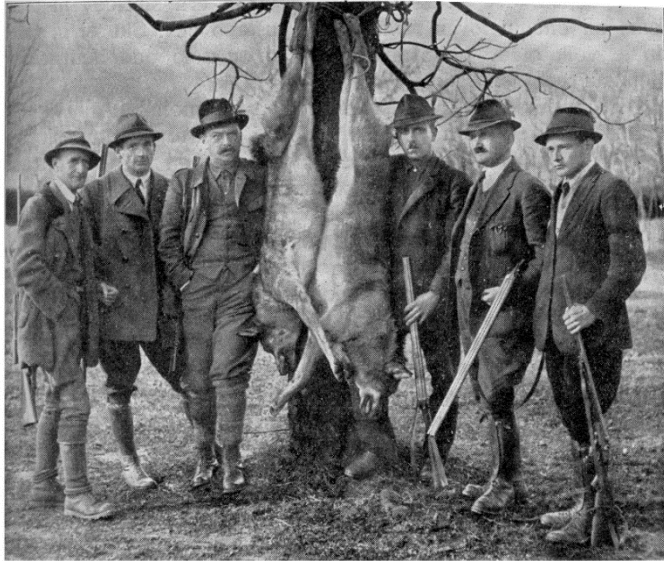
Rok Černe

Projektleiter



Source: LCIE

History of wolves in Slovenia

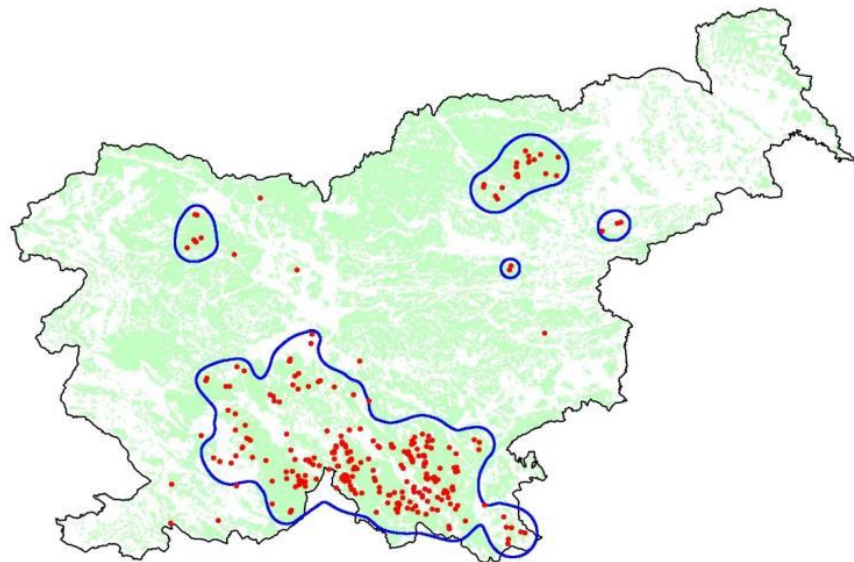


Po uspelem pogonu na volkove v kočevskih revirjih.

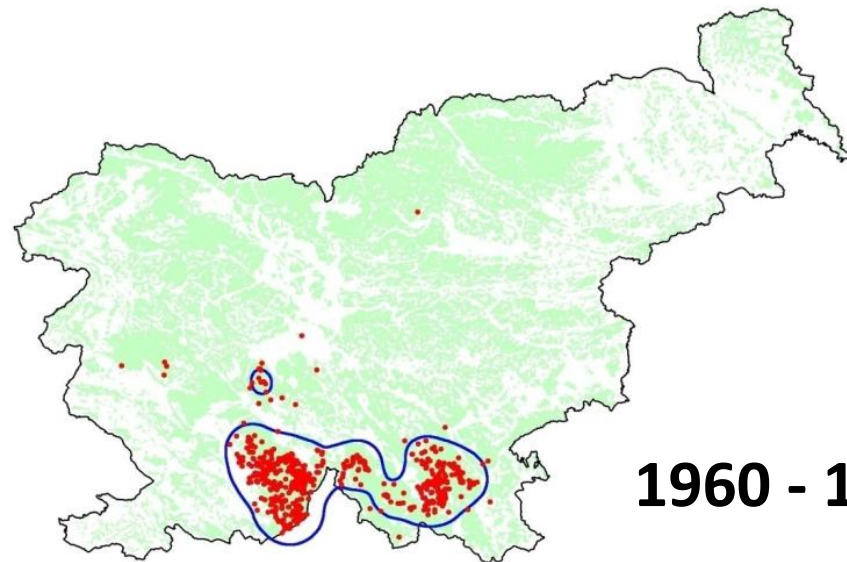


- Intense, government-sponsored persecution
- Almost completely exterminated in 20th century
- First (local) protection in 1973
- Complete protection by hunting association in 1990
- Government protection in 1993

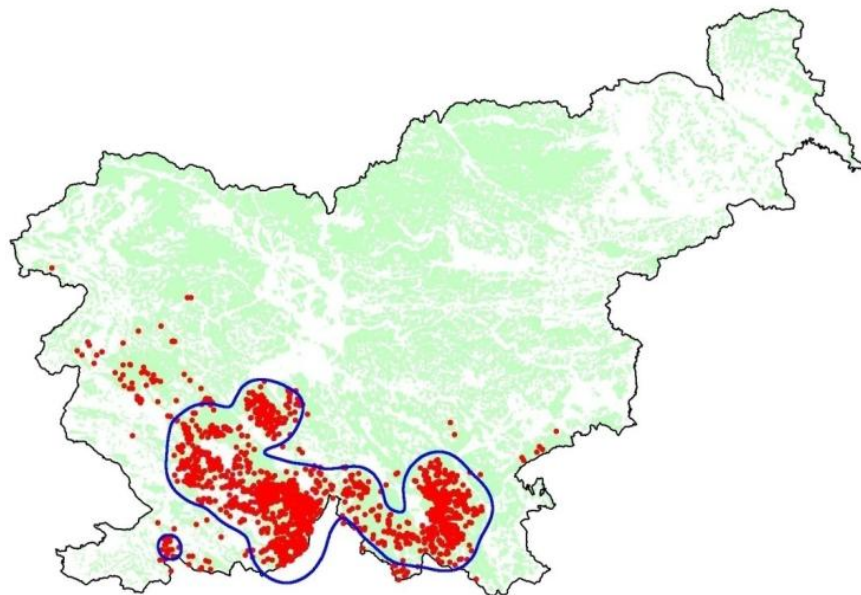
History of wolves in Slovenia



1873 - 1960



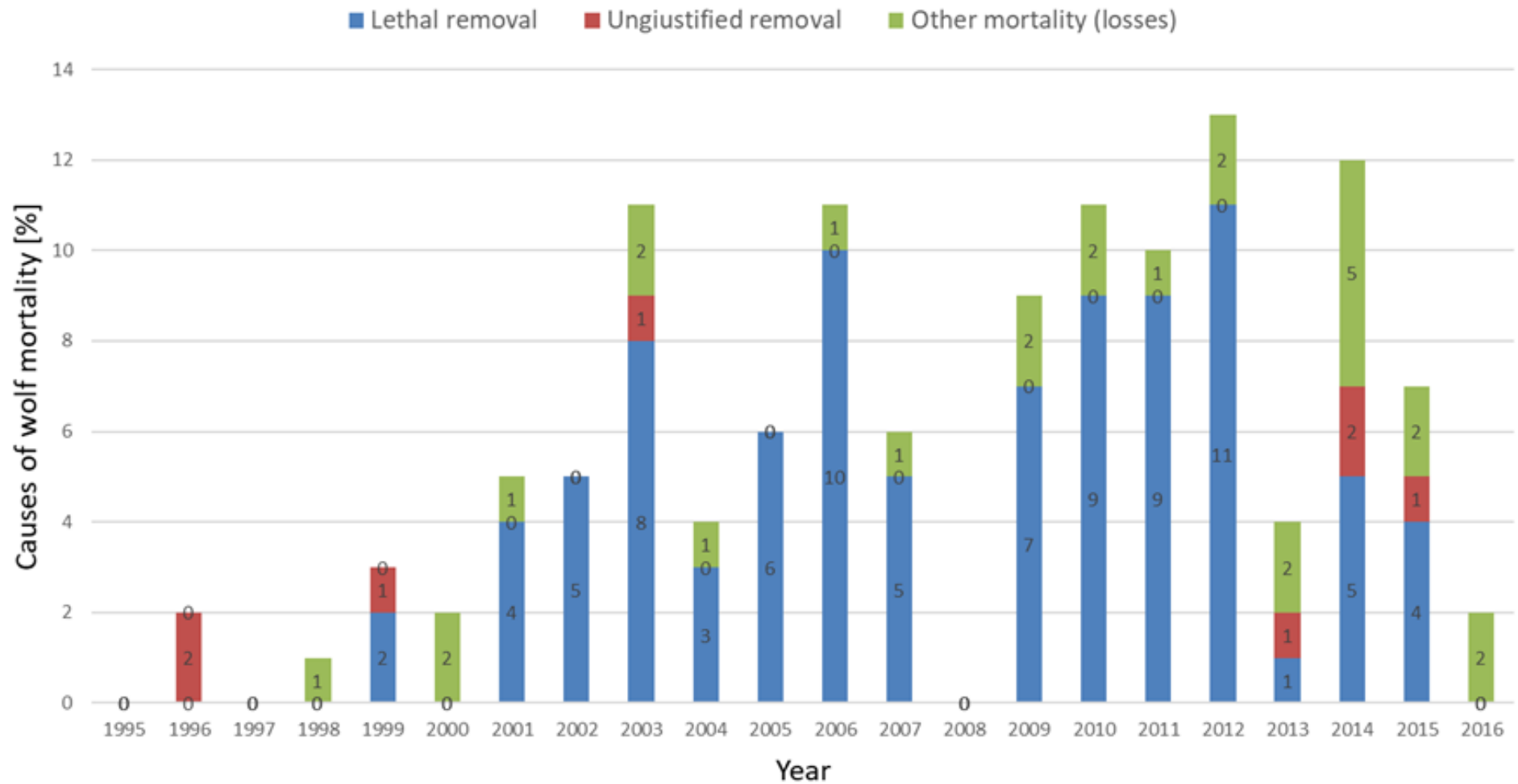
1960 - 1990



since 1990

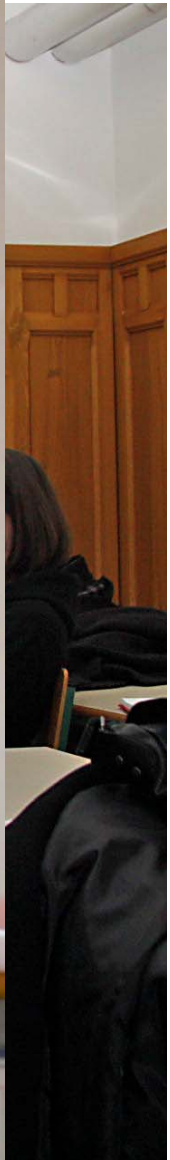
Wolf culling

Causes of registered wolf mortality in Slovenia from 1995 to 2016



Average 15% of the population culled yearley

Slov



Livestock depredations

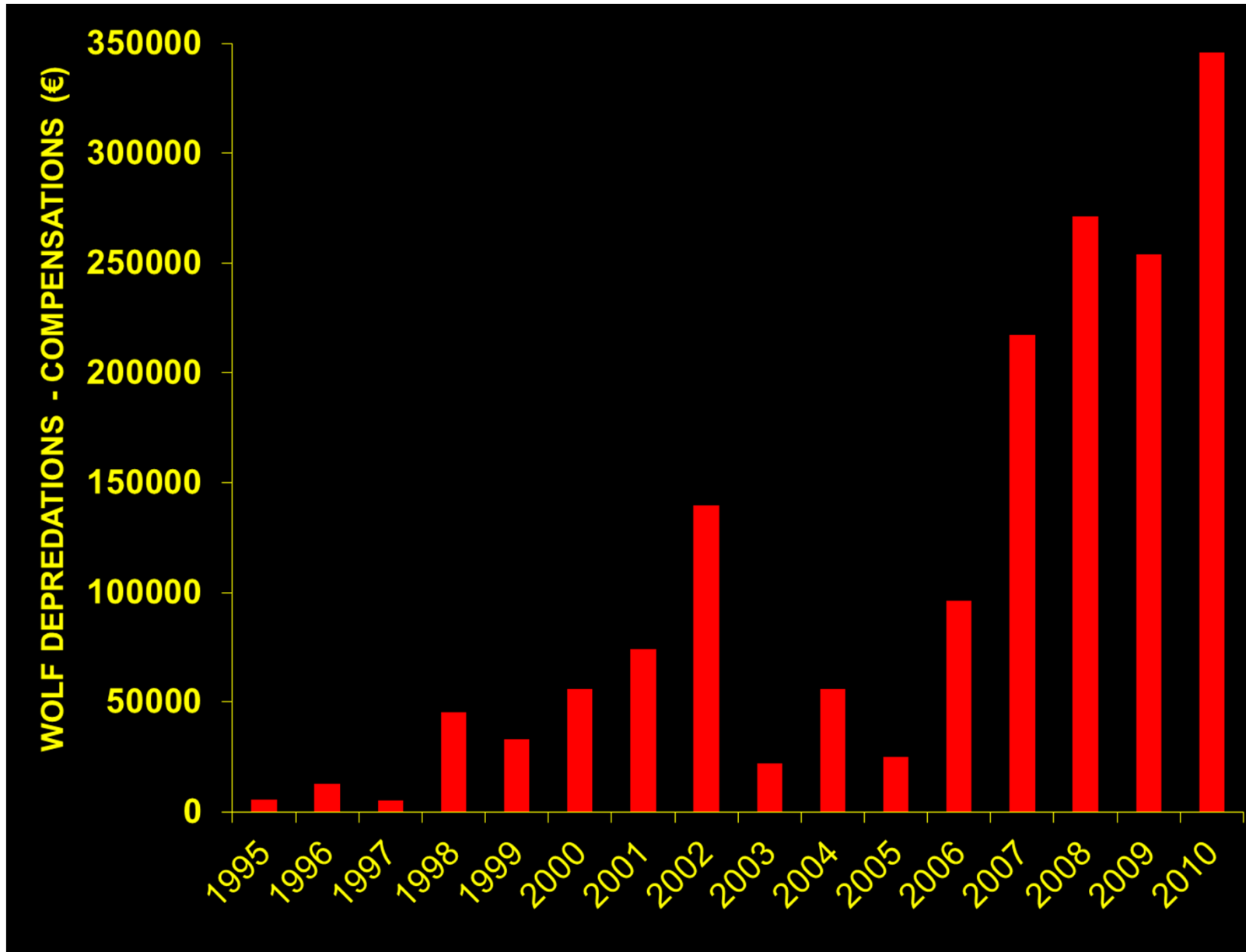


Prevention of damages before 2010

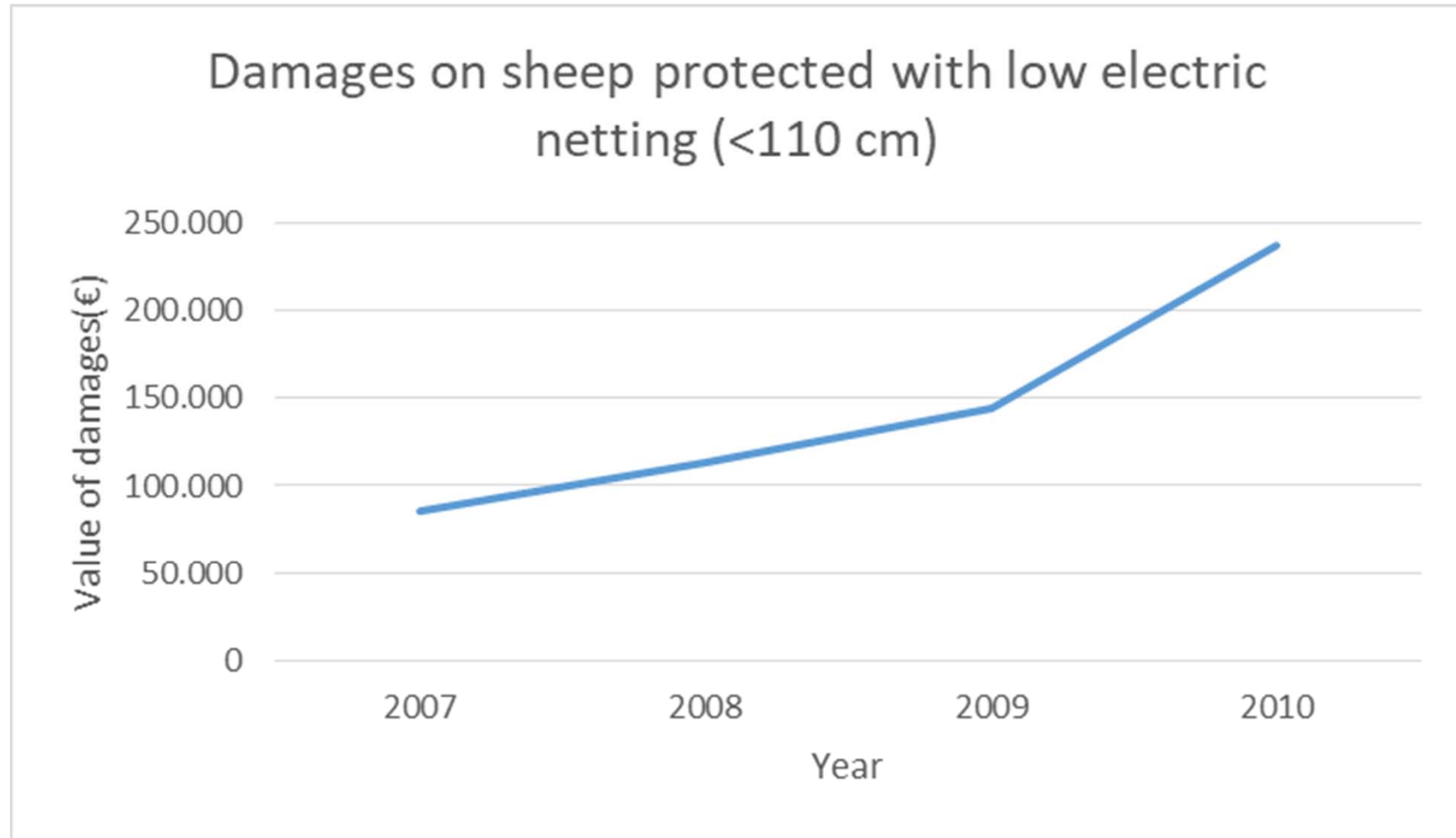
Agency for environment subsidized buying 100cm high electric fences



Prevention of damages before 2010



Prevention of damages before 2010



Common belief that nothing can be done especially against wolf attacks

Project SloWolf – IMPROVED PROTECTION (2010 – 2014)



**First year the situation improved but
damages occurred again**



Most common mistakes



Results (2010 - 2014)

User	Year of implementation	Source	Damage (avg/year) BEFORE IMPLEMENTATION (3 years)	Damage (avg/year) AFTER IMPLEMENTATION
Livestock breeder	2011	SloWolf	84.032	4.383
Livestock breeder	2011	SloWolf	1.984	300
Livestock breeder	2011	SloWolf	1.857	0
Livestock breeder	2011	SloWolf	7.990	237
Livestock breeder	2011	SloWolf	4.596	0
Livestock breeder	2012	SloWolf	6.531	0
Livestock breeder	2012	SloWolf	1.412	0
Livestock breeder	2012	SloWolf	4.119	0
Livestock breeder	2012	SloWolf	0	0
Livestock breeder	2013	SloWolf	5.806	762

More than 100.000EUR/yearly damage compensation money saved due to properly implemented protection measures.

Regular work with farmers and control



Zapisnik št.: K / _____ / _____ / _____ / _____

(K (kontrola) / št. OE / začetnici pooblaščenca / leto / zaporedna številka zapisnika o kontroli)

ZAPISNIK O IZVEDBI:

(Označi z X)

<input type="checkbox"/>	PONOVNEGA PREGLEDA IZVEDBE UKREPA ZA PREPREČITEV NADALJNJE ŠKODE (prvi pregled izveden dne: _____)
<input type="checkbox"/>	KONTROLE PRAVILNEGA VZDRŽEVANJA IN NAMENSKE UPORABE UKREPA ZA PREPREČITEV NADALJNJE ŠKODE

PODATKI POOBLAŠČENE OSEBE

Organizacija: (označi z X)	
<input type="checkbox"/> Zavod za gozdove Slovenije (ZGS)	<input type="checkbox"/> Društvo Dinaricum
Ime in priimek:	
Območna enota ZGS:	
Datum obiska:	Ura obiska:

PODATKI UPRAVIČENCA

Ime in priimek:	
Naslov:	
Davčna številka:	Telefonska številka:

VIR ZAŠČITNIH SREDSTEV (označi z X)

<input type="checkbox"/>	ARSO (Pogodba št. _____)
<input type="checkbox"/>	LIFE DINALP BEAR

Ukrep za preprečevanje nadaljnje škode varuje:

- Ovce / Koze Število živali (ocena):
- Stacionarni čebelnjak / Premični čebelnjak
- Drugo:

1. Lokacija zaščitnih sredstev (ime kraja, ledinsko ime, ipd):


Koordinate: X: _____ Y: _____

2. Ob ogledu izvedenih ukrepov je bilo ugotovljeno naslednje stanje (obkroži / zapiši):

Električni tok prisoten	DA / NE
Napetost v električni ograji:	
– ob spoju s pašnim aparatom	KV
– na sredini oboja ograje	KV
Za ozemljitev so uporabljene vsaj 3 ozemljitvene palice	DA / NE
Travna ruša pod ograjo pokošena	DA / NE
Količki stabilni in postavljeni navpično	DA / NE
Mreže / žice napete	DA / NE
Mreže / žice se dotikajo vegetacije (grmovja, dreves, ipd.)	DA / NE
Prisotnost vdolbin pod ograjo (zveri lahko prehajajo pod ograjo)	DA / NE
Poškodovanost ograje (ocena):	
Nepoškodovana 1 2 3 4 5 Močno poškodovana, nedelujoča	
Opis poškodb:	
Ograda je po celotni dolžini visoka vsaj 160 cm (oz. večjična ograja 150 cm)	DA / NE
Dolžina ograde	m
Ograda je sestavljena iz	
– elektromrež – skupna dolžina	m
– pocinkane žice – število linij	linij
Uporaba solarnega panela za napajanje akumulatorja	DA / NE
Ograda je postavljena... (obkroži)	
na ravnem terenu v breg na kamnitem terenu skozi zarasčeno zemljišče skozi gozd	
Ob ogledu so živali v ogradi	DA / NE
Prisotnost pastirskega psa	DA / NE
– število psov ob čredi	
Dodatni zaščitni ukrepi?	
Nepravilnosti in opažanja:	

Regular work with farmers and control

YEAR	USER	NUMBER OF DISTRIBUTED ELECTRIC FENCES		
2011	Livestock breeders	5		
2012	Livestock breeders	4		
2013	Livestock breeders	1		
2015	Livestock breeders	12		
	Beekeepers	11		
2016	Livestock breeders	9		
	Beekeepers	13		
2017	Livestock breeders	14		
	Beekeepers	16		
		85*		



LIVESTOCK GUARDING DOGS

- 2010 – 2013

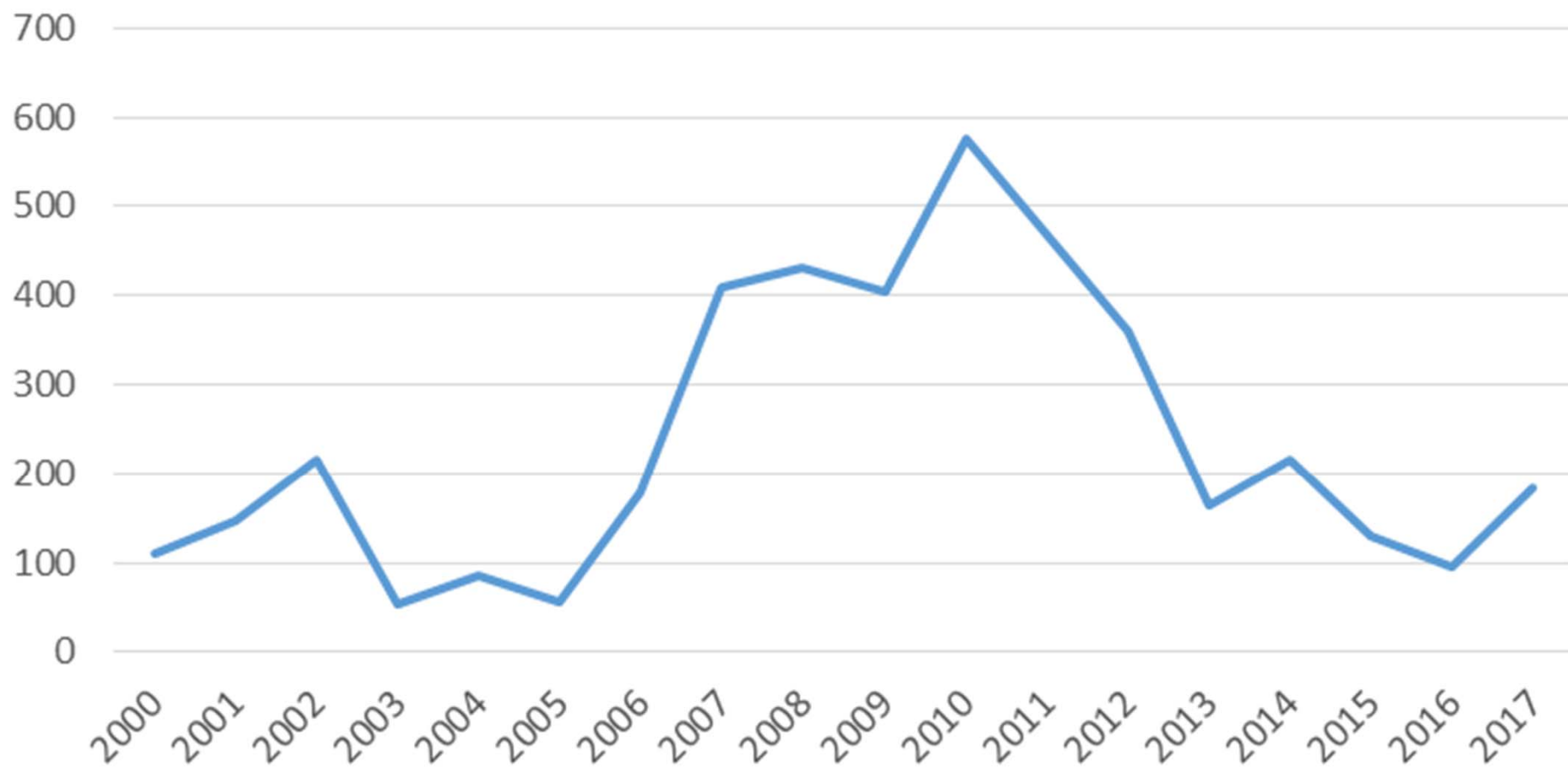
Distribution of 20 dogs.

- 2015 – ongoing

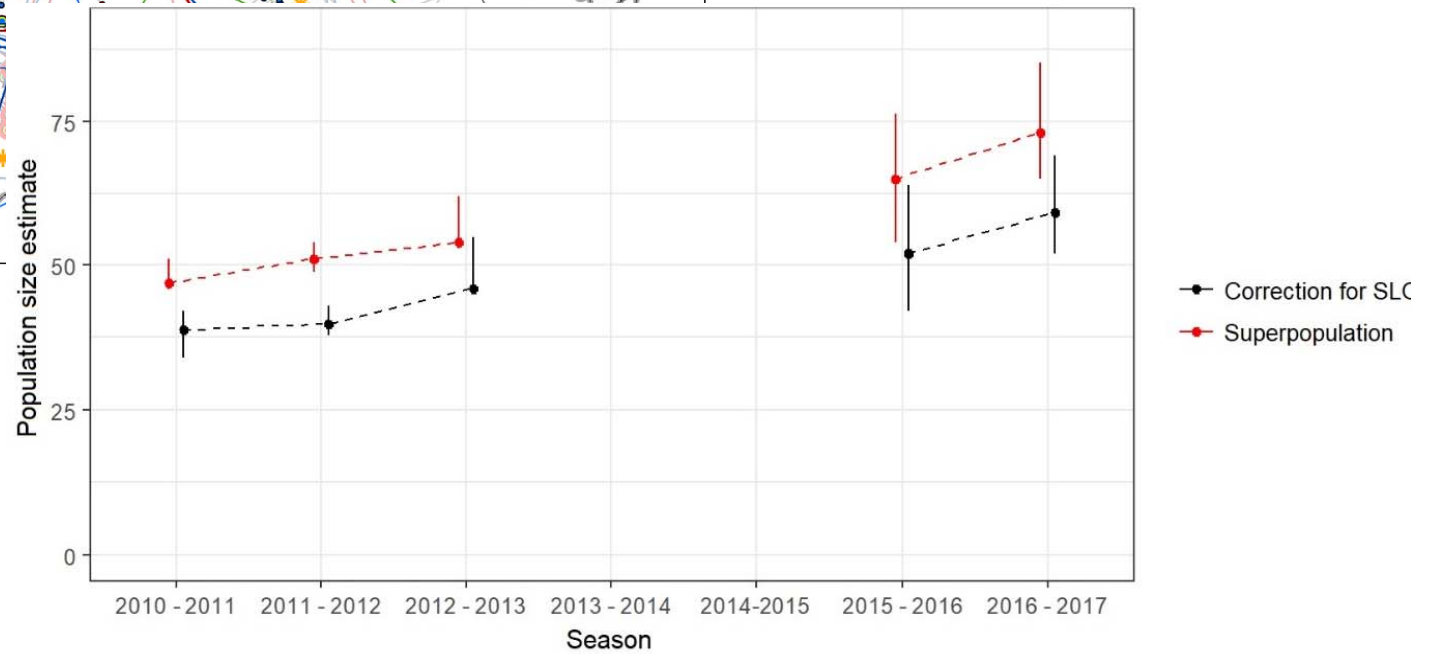
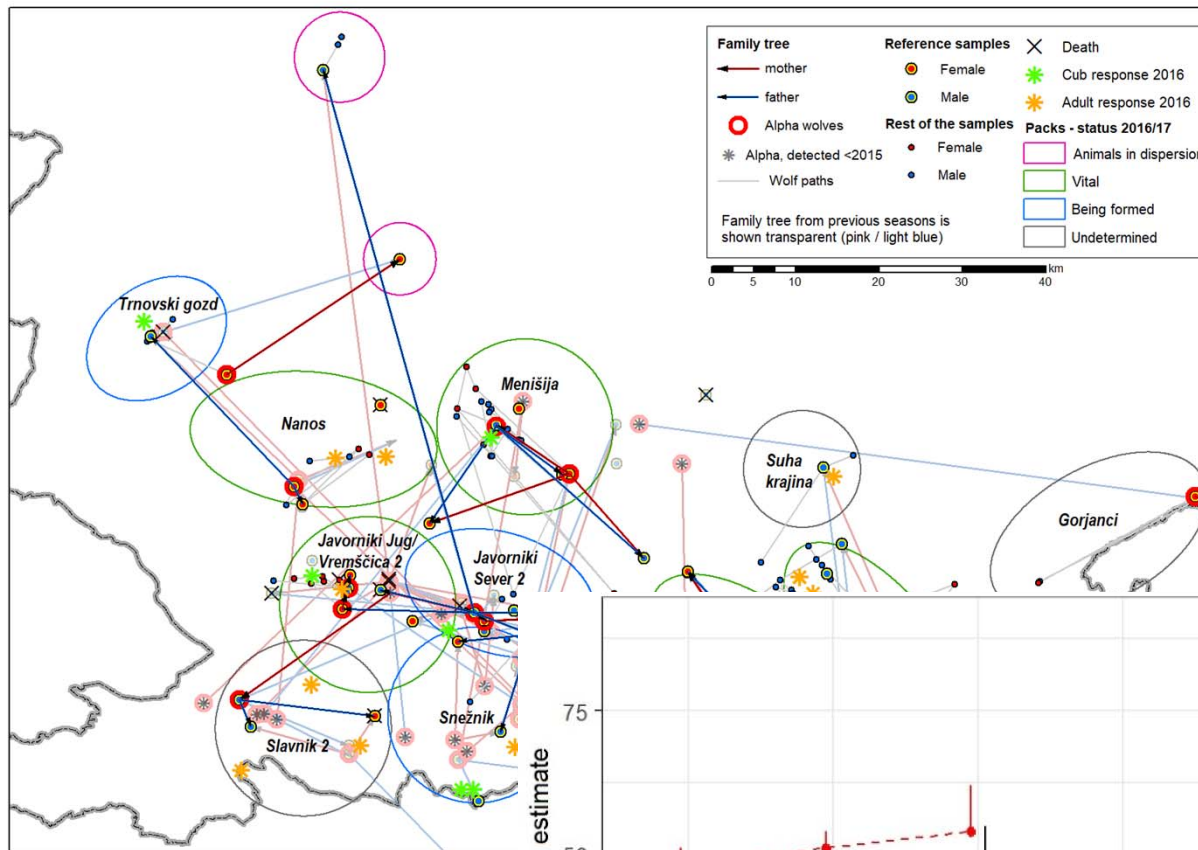
5 breeders who distribute guarding dogs from working lines.



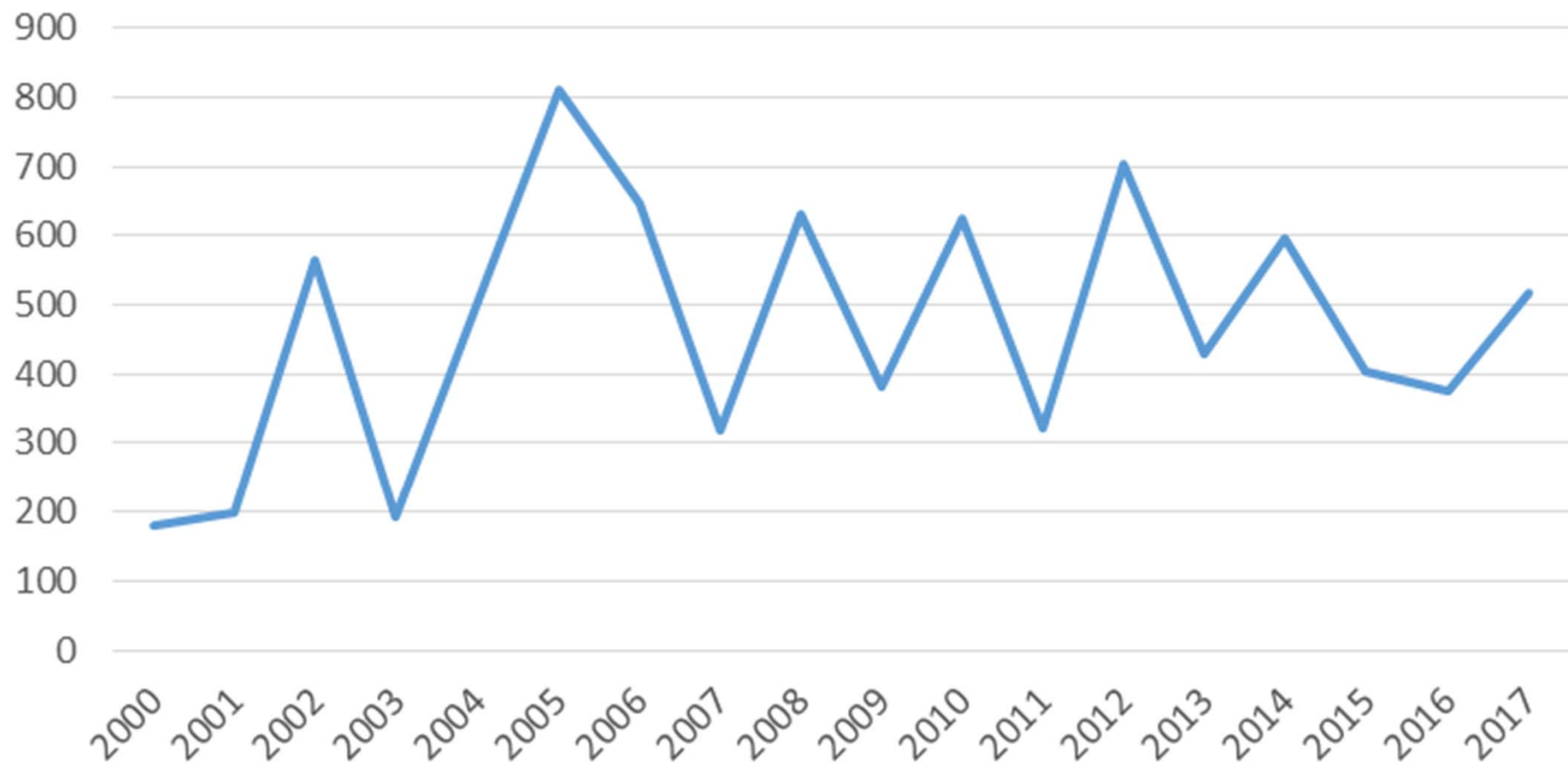
Number of damage cases - WOLF



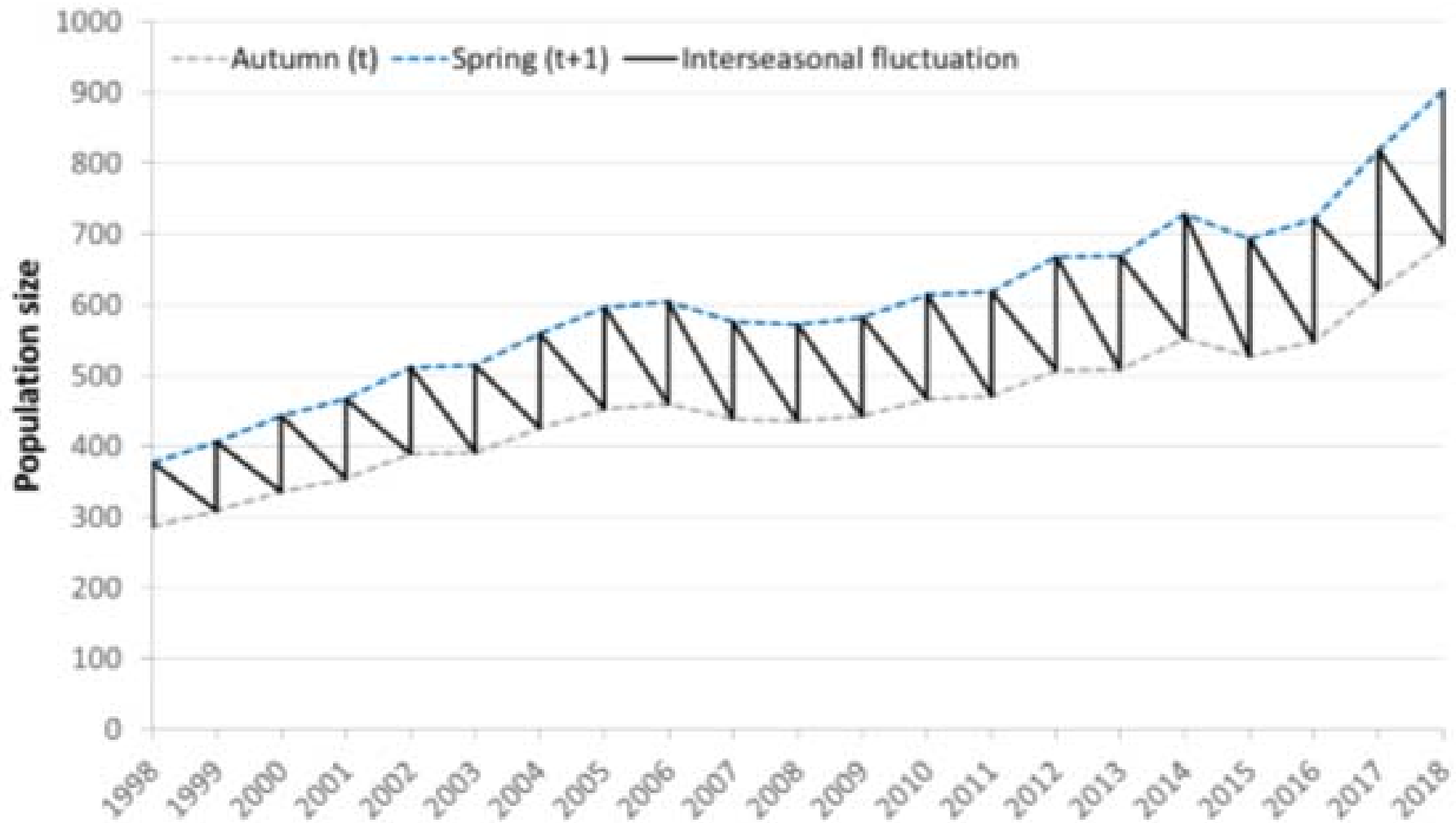
Wolf population in Slovenia



Number of damages cases - BROWN BEAR



Bear population in Slovenia



“Obstacles for further reduction of damages“

- Spatial expansion of LC in Slovenia
- Voluntary approach

Future perspective

- Obligatory use of prevention measures to obtain damage compensation
- Active management of the population (bear, wolf)

THANK YOU FOR YOUR ATTENTION!



ZAVOD za GOZDOVE
SLOVENIJE



Republic of Slovenia
Ministry of the environment
and spatial planning



University of Ljubljana
Biotechnical faculty